

2
Types

Drums

Friability Tester supports 2 types of drum :

- Standard drum
- Abrasion drum (for more rigorous informational testing of tablet and coating integrity)

1

Snap-lock™ mechanism

- Single or double drums can be held in position by a Snap-lock™ knob
- Ergonomic and error free operation

2
Modes

Operation

The test can be performed in two different modes

- Timer mode
- Counter mode

ABC123

Alphanumeric keypad

- Alphanumeric keypad to enter the product and sample information

QbD

Quality by Design

- Complies with USP, Ph. Eur, IP specifications
- Automatic discharge of test samples into their individual trays
- Loading of samples into the drum without removing the drum
- Unique front loading system of the drum
- Positive engagement of the drums with the drive prevents any slippage
- 10° tilt of the drum with the bench top as per USP
- Test data for ten different drugs can be saved as protocols
- Drums positions are unique ensuring accuracy of the results
- Automatic drum positioning for loading new samples
- Retention of programmed values in the memory of the instrument
- Online validation of the revolution count and speed
- Power failure detection allows remaining test completion on power resumption

f_x

Results

- Results like % friability and weight-loss can be calculated

Friability Testers



Dual Drum Friability Tester with Weighing Scale Interface (EF-2W)

Dual Drum Friability Tester (EF-2) is also available



Front loading



Tilt



Security with password



Multi Level Security



LAN (optional)

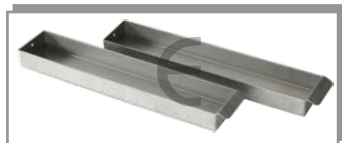


Print Report

Standard accessories



Friability drum
EF-1W Part no - 0402A00009
Position A - 0402A00012
Position B - 0402A00013



Tablet collection SS drawer
Position A - 0403A00001
Position B - 0403A00003



Abrasion drum
Part no - 0402A00008

Optional accessories



Printer Epson LX-310 plus
Part no - 0201A00020

21 CFR Part II Compliant



Limited System Access



Authority Checks



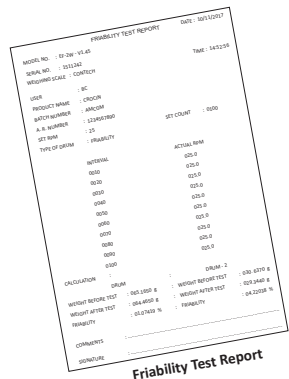
Audit Trail



Metadata Storage



Electronic Signature



Friability Test Report

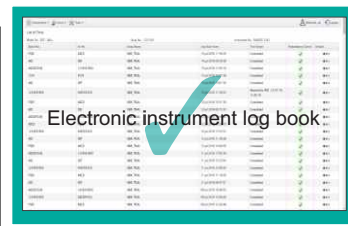
Fingerprint Authentication



Biometric kloudface™

Specifications

Model	EF-2W		EF-2	
	230 Volts	110 Volts	230 Volts	110 Volts
Product code	M.S. : 0420300 S.S. : 0440300	M.S. : 0410300 S.S. : 0430300	M.S. : 0420200 S.S. : 0440200	M.S. : 0410200 S.S. : 0430200
No. of drums	2		2	
Speed	20 RPM to 60 RPM		25 RPM	
Accuracy	± 0.5 RPM		± 1 RPM	
Timer	1 sec to 9 hrs. 59 min 59 sec		1 sec to 9 hrs. 59 min 59 sec	
Count	1 to 9999 revolutions		1 to 99999 revolutions	
Display	24 x 2 character LCD		5 digit LED	
Printer Interface	Serial		—	
PC Connectivity	Standard : Serial Optional : External LAN		—	
Electrical power	220/230 V AC ± 10%, 50 Hz, 18 VA 100/110 V AC ± 10%, 50/60 Hz, 18 VA		220/230 V AC ± 10%, 50 Hz, 18 VA 100/110 V AC ± 10%, 50/60 Hz, 18 VA	
Dimensions (W x H x D)	35 cm x 43 cm x 31 cm		35 cm x 43 cm x 31 cm	
Weight	12 kgs		12 kgs	



Electronic instrument log book



Care & Maintenance

- Routinely check drum(s) for signs of cracks or chips
- Clean the drum(s) thoroughly using de-ionized water and dry with lint-free cloth

Our Products

- Complete range of Dissolution Testers
- Dissolution Media Preparator
- Disintegration Testers
- Tablet Hardness Testers
- Electromagnetic Sieve Shakers
- Tap Density Tester
- Bulk Density Tester
- Powder Flow Tester
- Leak Tester
- Peristaltic Pumps



The information contained in this document is believed to be correct but ELECTROLAB accepts no liability for any errors and reserves the right to alter specifications without notice
 December, 2017 / 017A001

ELECTROLAB (India) PVT. LTD. (CIN NO : U33110MH2002PTC136735)

Head Office : 401, Tirupati Udyog, I. B. Patel road, Off. Western Express highway, Goregaon (East), Mumbai - 400 063, India.

Tel : +91 - 22 - 4041 3131 • E-mail : sales@electrolabgroup.com

Factory : EL 23/24, T. T. C., Electronic Zone, M. I. D. C, Mahape, Navi Mumbai - 400 710, India.

Tel : +91 - 22 - 4161 3122 • Website : www.electrolabgroup.com

ELECTROLAB
 Sales
 &
 Service
 Worldwide

ELECTROLAB